



MILESTONE

COMMERCIAL REALTY

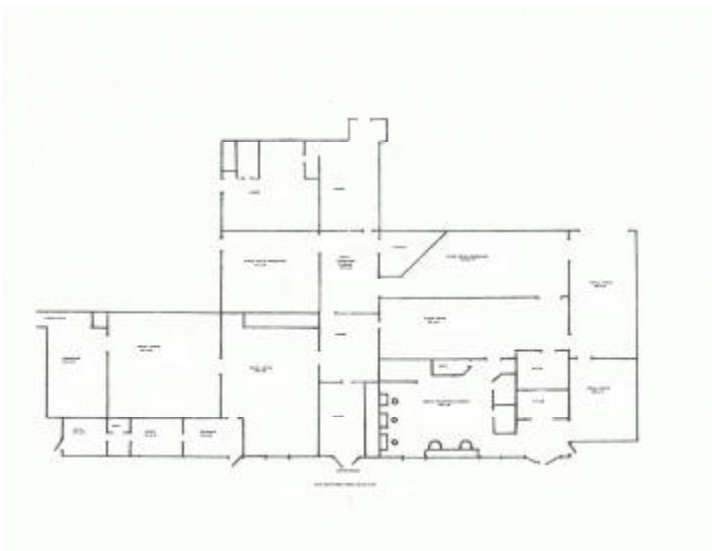


FOR LEASE **Office / Retail**

**305 W. Main Street
Rising Sun, Maryland**

**1,000-9,000 sq. ft.
Available**

- **Zoned LC- Light Commercial**
- **Office/ Retail /Medical/ Contractor**
- **High Visibility Rt. 1 Traffic**
- **Can be Subdivided**
- **Asking \$12/ sq. ft. NNN**



CALL:

RICK LEIPOLD - CCIM - # 410.441.4419

**Milestone Commercial Realty
P.O. Box 1218
Elkton, MD 21922-1218
410.620.5115
www.MilestoneCR.com**