



# MILESTONE COMMERCIAL REALTY



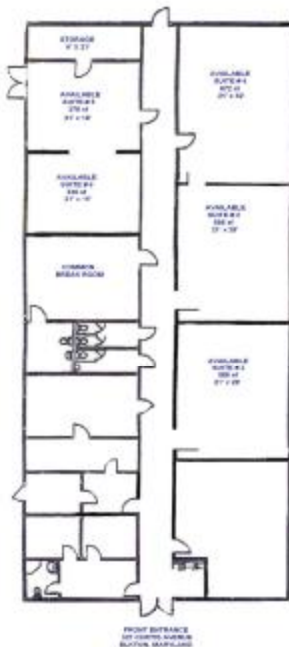
## **LEASE**

### **Bohemia Professional Center**

**327 Curtis Avenue  
Elkton, Maryland**

**336 sf- 2,688 sf  
PROFESSIONAL  
OFFICE SPACE  
AVAILABLE**

- ZONED C-2
- CLOSE TO RT. 40, DOWNTOWN ELKTON, AND UNION HOSPITAL
- PUBLIC WATER / SEWER
- LEASE - \$15.00/ sf NNN



**CALL:**

**RICK LEIPOLD, CCIM - # 410.441.4419**

**Milestone Commercial Realty  
P.O. Box 1218  
Elkton, MD 21922-1218  
o- # 410.620.5115  
[www.MilestoneCR.com](http://www.MilestoneCR.com)**